

Large Language Models (LLMs): Transformative impact of LLMs on society and future applications

Suraj Phirke

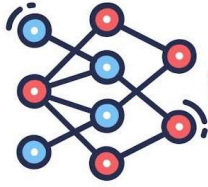
Large language Models (LLMs) are one of the most disruptive areas of artificial intelligence. These architectures have changed the way we communicate with technology, learn or solve complex problems by being designed for the construction and understanding of human-like language. From virtual assistants to targeted learning using the advancements in the learning field, LLMs are driving the boundaries of innovation, and, consequently, creating new domains for social good. This paper examines key concepts of LLMs, functionalities of LLMs, advantages of LLMs, disadvantages of LLMs, future scope of LLMs, by the way of real-world applications of LLMs, with examples to illustrate the impact of LLMs.



The Key Concepts of Large Language Models

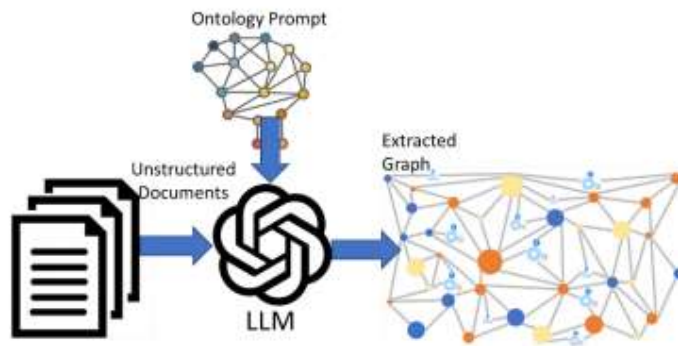
What Are LLMs?

LLMs are the artificial intelligence systems trained on large amounts of data (such as multilingual text). The application of complex algorithms, such as the transformer



Large Language Models (LLMs): Transformative impact of LLMs on society and future applications

architecture, allows LLMs to be rendered in an interesting, understandable and naturally fluent way, with high accuracy.



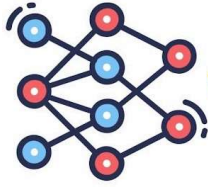
How Do They Work?

The training architecture of LLM includes –

- Transformer Architecture – LLMs apply a self-attention mechanism by which they view text in context, that is, how words relate with other words which are nearby.
- Training Procedure – While being instructed, for instance billions of sentences they pick up patterns and relations between concepts in language. In turn through this training, they master grammar, syntax and semantics.
- Fine tuner – As trained, LLM can be tuned for certain purposes like translation, summarization or content creation.

Applications of LLMs in Society

- Communication and The Customer Support



Large Language Models (LLMs): Transformative impact of LLMs on society and future applications

LLMs drive chatbots and virtual assistants, providing, 24/7 support, which is accessible to customers. For example, AI is used by banks to provide prompt answers to requests, not to mention to reduce cost and to improve the quality of experience.

- Education and E-Learning

Educational content (e.g., Khan Academy) and learning platforms that uses personalized tutors created from learning algorithms and combined with Large Language Model (LLM) can be used for adaptive pacing and understanding. These teaching models can be adapted to students by way of LLMs, in order to meet the communicative need for study abroad in international education.

- Content Creation and Creativity

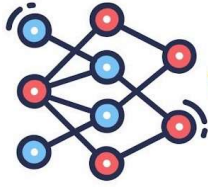
Using LLMs authors, marketers, and designers can quickly generate ideas galore and quickly produce written prose.

- Healthcare Support

In the medical field, LLMs are used to get assist with report writing, historical information extraction, and to provide an initial step in the development of diagnostic support to doctors, which leads to more efficient, rapid clinical care.

Benefits of LLMs

- Intuition: Automates mundane processes guaranteeing time and resources are saved.
- Scaling capabilities: Processes huge amounts of data guaranteeing extensive insight.
- Integrability: It keeps growing by learning from new information's.



Large Language Models (LLMs): Transformative impact of LLMs on society and future applications

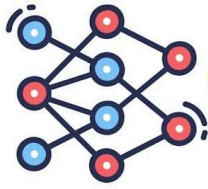
- **Multilingual Functions:** Translates languages in real time without losing any distortions in communication.

Costs associated with LLMs

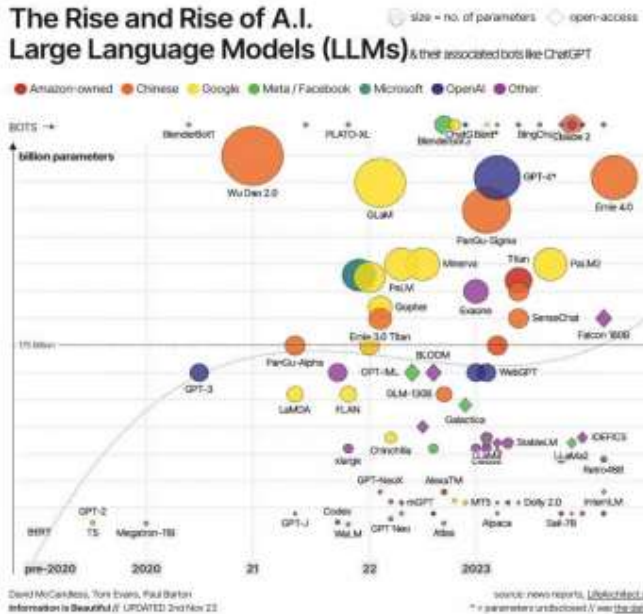
- **High Investment Returns:** LMs, including their maximum potential, are computationally (i.e., power hungry) costly to train.
- **Moral Issues:** We need to be aware that there might have chances that people might misuse the information, treat others unfairly.
- **Black Box Situation:** Are usually "Black boxes" leading to obfuscation in their reasoning ability.
- **Huge labelling dependency:** Need large amount of labelled data and black box may not be available readily or on agreed upon ethics.

The areas where LLMs can be applied in the future.

- **Integrating The Non-Textual Content Multimodally:** The next generation the LLMs will be able to integrate many things like text, images and video that will use to create more advanced and interactive experiences like VR or immersive learning.
- **Translation Services:** In conversation language the barriers could be broken through instant translating services through accurate translations within span of seconds.
- **Legal and Financial Counselling:** GenAI can make the LLMs more readily available and cheaper by automating legal research, document preparation and financial advice.
- **Using large language models (LLMs) with smart cities and IoT systems** assists to further advance cities by enabling devices to communicate with one another and comprehend better the needs of humans.



Large Language Models (LLMs): Transformative impact of LLMs on society and future applications

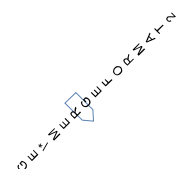


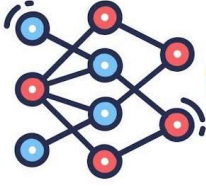
Real-Life Example: ChatGPT in Action

ChatGPT, it is an LLM introduced by OpenAI, demonstrates the potential of a societal metamorphosis. It has been a real triumph in education, definition of the concept, in a business for customer service automation and also in the creative industries for the emergence of new ideas. Such as, In the coronavirus disease (COVID-19) pandemic, ChatGPT has been producing and distributing technical health information to the general public.

Conclusion

Large Language Models are transforming society by automation, by transferring the creativity of the human brain into solution strategies, and by addressing complex problems. Their range is broad (representing each industry), and include technologies which were not only not conceived to be achievable. Despite the challenges (computational cost, ethics, and





Large Language Models (LLMs): Transformative impact of LLMs on society and future applications

interpretability), solutions for these challenges today are abundant in the literature. Although there is a demand for careful deployment caution and responsible use, ominously, LLMs may pave the way for technology, that can truly be a benefit to and resource for humankind.